

**Rural Municipality of Lumsden No. 189  
Bylaw No. 12 – 2013**

A bylaw to amend Bylaw No. 6 – 2012 known as the Official Community Plan of the R.M. of Lumsden No. 189.

The Council of the R.M. of Lumsden No. 189 in the Province of Saskatchewan enacts to amend Bylaw No. 6 – 2012 as follows:

1. **SECTION 4.0 FUTURE LAND USE MAPS** is amended by deleting **Map 7: Development Constraints** and replacing it with the new **Map 7: Development Constraints**, which is attached to and forms part of this bylaw as Schedule "A".
2. **SECTION 5.0 IMPLEMENTATION** section 5.1 Zoning Bylaw is amended by deleting the following subsection:  
  
“(11) **M1 – Industrial District**  
  
The objective of the M1 – Industrial District is to accommodate the continued development and use of the Webfam Developments Ltd., industrial development, located in part of the NE ¼ Section 18, Township 19, Range 20, west of the 2<sup>nd</sup> Meridian.”
3. This Bylaw will come into force and take effect upon date of final approval by the Minister of Government Relations.

**Readings**

Read a first time this 15<sup>th</sup> Day of August 2013.

Read a second time this 12<sup>th</sup> Day of September 2013.

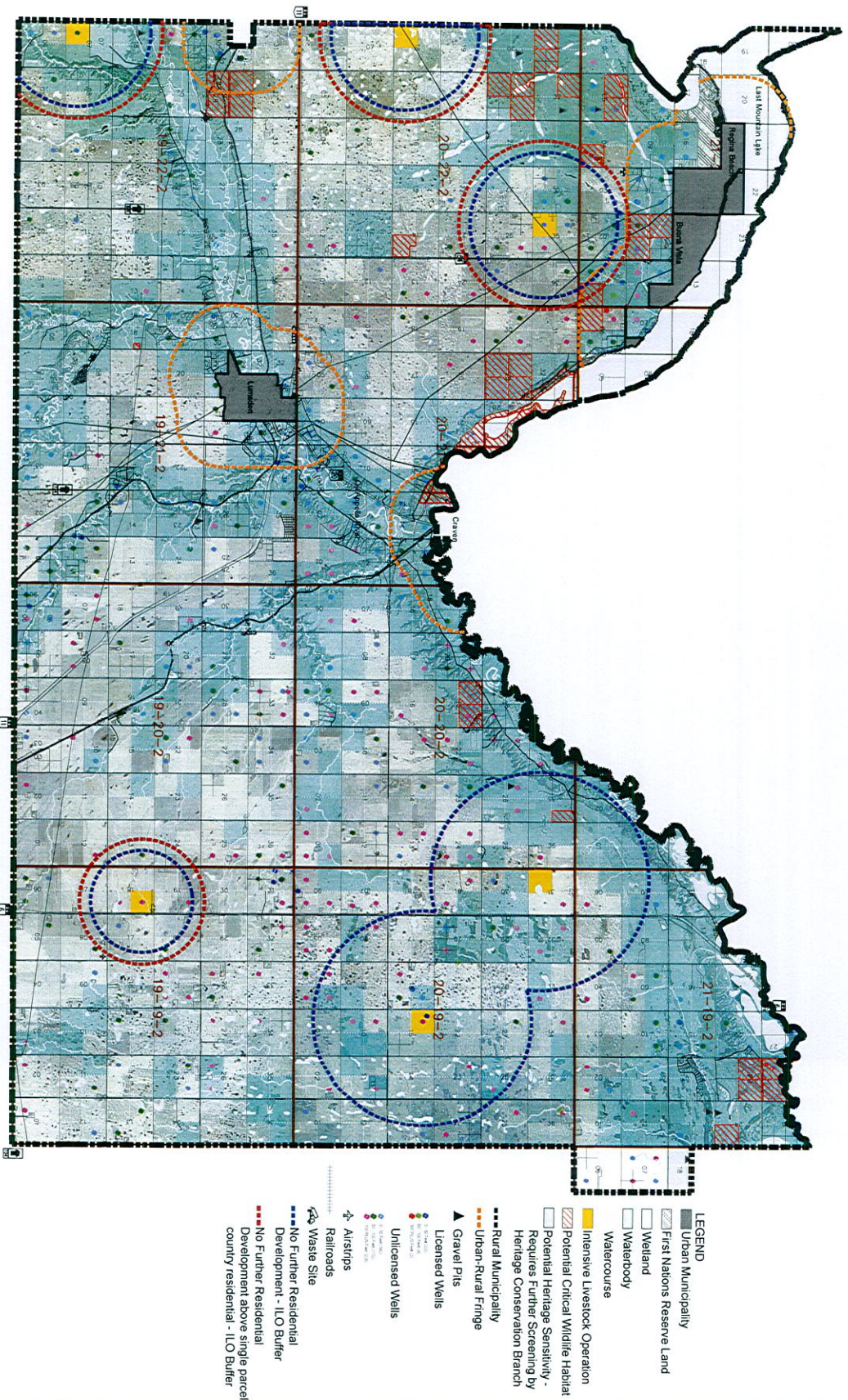
Read a third time this 12<sup>th</sup> Day of September 2013.



  
Reeve

  
Chief Administrative Officer

SCHEDULE "A" - Bylaw 12-2013



R.M. of Lumsden No. 189  
 Future Land Use Map 7 - Development Constraints  
 GROSSBY HANNA & ASSOCIATES - LANDSCAPE ARCHITECTURE AND PLANNING

