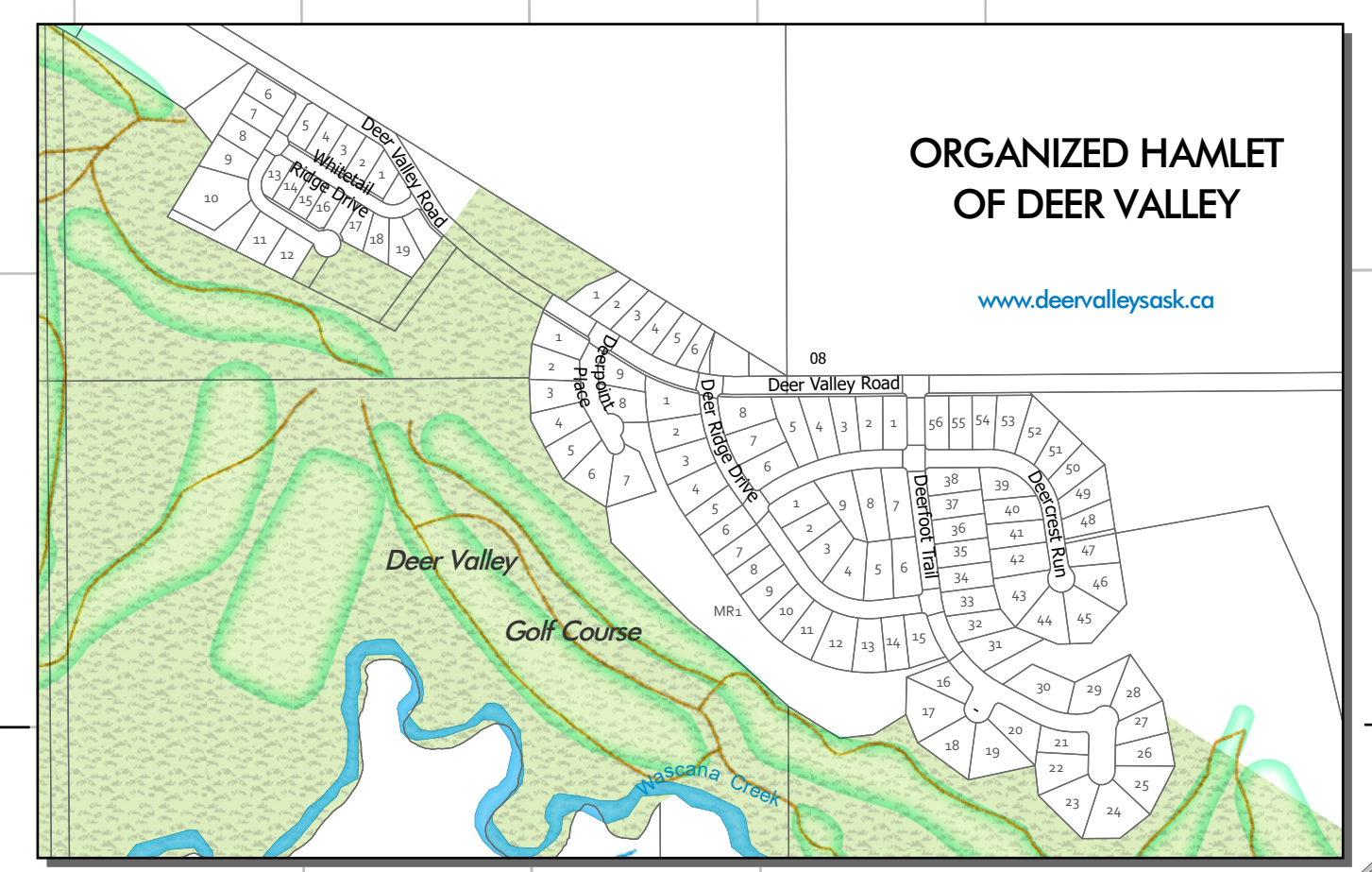
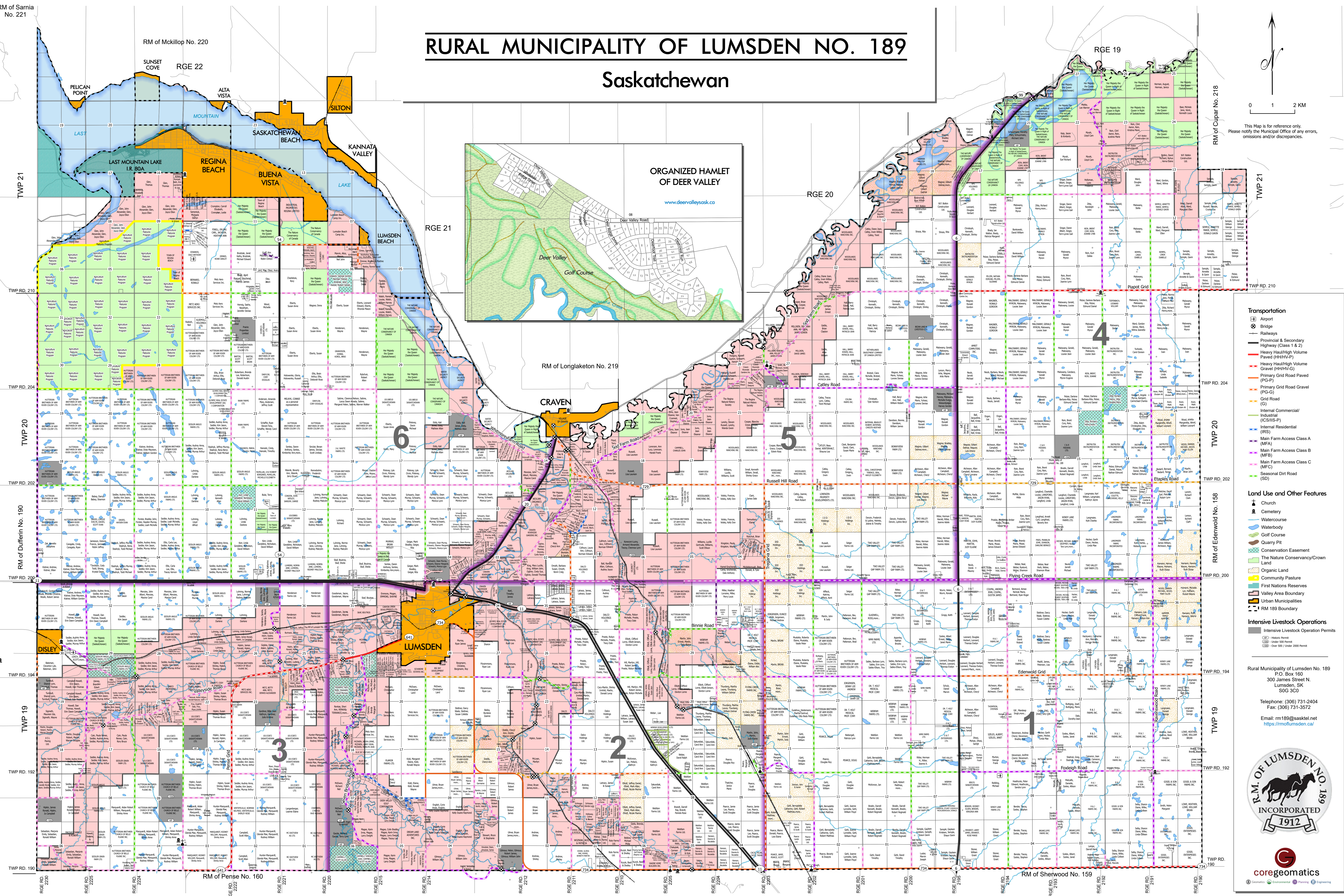
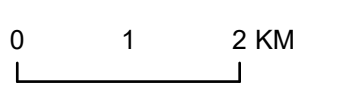


RURAL MUNICIPALITY OF LUMSDEN NO. 189

Saskatchewan



This Map is for reference only. Please notify the Municipal Office of any errors, omissions and/or discrepancies.



- Transportation**
 - Airport
 - Bridge
 - Provincial & Secondary Highway (Class 1 & 2)
 - Heavy Haul/High Volume Paved (HH/HV-P)
 - Heavy Haul/High Volume Gravel (HH/HV-G)
 - Primary Grid Road Paved (PG-P)
 - Primary Grid Road Gravel (PG-G)
 - Road
 - Internal Commercial/Industrial (IC/IS-P)
 - Internal Residential (IR-S)
 - Main Farm Access Class A (MFA)
 - Main Farm Access Class B (MFB)
 - Main Farm Access Class C (MFC)
 - Seasonal Dirt Road (SD)
- Land Use and Other Features**
 - Church
 - Cemetery
 - Watercourse
 - Waterbody
 - Golf Course
 - Quarry Pit
 - Conservation Easement
 - The Nature Conservancy/Crown Land
 - Organic Land
 - Community Pasture
 - First Nations Reserves
 - Valley Area Boundary
 - Urban Municipalities
 - RM 189 Boundary
- Intensive Livestock Operations**
 - Intensive Livestock Operation Permits
 - Over 500 Permits
 - Under 2000 Permits

Rural Municipality of Lumsden No. 189
 P.O. Box 160
 300 James Street N.
 Lumsden, SK
 S0G 3C0
 Telephone: (306) 731-2404
 Fax: (306) 731-3572
 Email: rm189@sasktel.net
<https://rml189.com/>

